



ECLIPSE
Elevate Your Lifestyle

Home elevator by
 **savaria**®

Contents

• Eclipse: An Introduction	04
• Customization Options	08
<i>Cab Designs</i>	10
<i>Finishing Options</i>	11
<i>Control Panel Selections</i>	12
<i>Cab Types</i>	13
<i>Door Choices</i>	14
<i>Additional Features</i>	15



Eclipse - An Introduction



Classic at Its Finest

The Eclipse represents the pinnacle of Savaria's commitment to home mobility. Crafted specifically for residential use, it offers a seamless blend of traditional elevator elegance with contemporary innovation. The Eclipse elevates not just between floors, but also the very essence of your home. It enhances its value with unmatched quality and design. It's more than just an elevator; it's a testament to accessible, luxurious mobility.

Tailor Your Eclipse Experience

The Eclipse Home Elevator is not just a mobility solution but a canvas for personal expression. It offers extensive customization options, allowing homeowners to harmonize the elevator with their unique interior design. Our comprehensive option catalogue is crafted to assist in hand-picking your perfect Eclipse setup. Explore an array of choices including diverse cab styles, finishes, control panels, door types, and additional features. The following details provide insight into each option, ensuring your Eclipse is a perfect fit for your home.

Defining Elegance

The true elegance of the Eclipse Home Elevator lies in its fusion of high-quality materials, exquisite interior design, sophisticated lighting, and meticulous attention to detail. This elegance is further personalized by the customization choices made by homeowners, catering to their unique tastes and requirements. The sum of these bespoke details, combined with the comfortable and secure experience, seamlessly integrates the elevator's elegance into the fabric of your home. Select your preferred options, and let us tailor the ideal home elevator for you.



Customization Options

ECLIPSE

Standard Features

- Capacity: Standard 341kg, 431kg
- Cab size: 900x1300x2030mm and 1100x1400x2130mm
- Speed: 0.20 m/s standard.
- Max. travel: Up to 6 stops / up to 15.24m of travel
- Fully automatic operation
- White ceiling with four LED lights
- Minimum overhead: 2438 mm for standard 2032mm cab
- Pit depth: Min pit 203mm, 229mm for stainless steel cab
- Digital display (floor & directional indicator) in car operating panel (COP)
- Rectangular hall call station
- Manual lowering

Optional Features

- Telephone
- Key on/off removable hall call station
- Oval hall call station design
- Speed: 0.25 m/s available where code permits
- Telephone cabinet to match car operating panel
- Keyed on/off hall stations
- Oval hall call design / cab position indicator on hall call station
- Touch-screen COP

Safety Features

- Cab gate safety switch
- Emergency stop and alarm buttons
- Emergency manual lowering with hand crank
- Emergency battery backup for cab lighting and lowering
- Safety brake and switch
- Meets international safety standard ASME 17.1

Beauty, Brawn & Brains

Your Savaria home elevator is built with care using reliable components to provide you with dependable performance, and to meet or exceed the strictest elevator, electrical, mechanical and building safety guidelines. Behind the beautiful exterior is one of the smartest brains around; the microprocessor-driven controller is demonstrably reliable and designed for up to 6 stops.

Feature-Rich Excellence

The Eclipse Home Elevator combines standard, additional, and safety features to enhance user experience, customization, and security. These features are integral to providing a superior and personalized elevator journey in your home. Explore the detailed features on the right to quickly familiarize yourself with the exceptional qualities that set the Eclipse apart in home mobility solutions.

1. Consult Savaria sales or your dealer for local code restrictions
2. Sizes higher than 1.39sqm and 431kg capacity available where code permits



1. Classic Elegance

- COP – small size
- Material - standard melamine
- Design – 1 panel

2. Opulent Touch

- COP – small size
- Material - luxury MDF
- Design - 2 panels horizontally

3. Elegance Grande

- COP – big size
- Material - standard melamine
- Design – 3 panels vertical



4. Sleek Modern

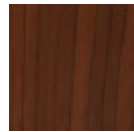
- COP –big size
- Material – steel or SS
- Design – 3 panels vertical

5. Crystal Panorama

- COP – small size
- Material –glass and standard melamine
- Design- 1 pane of glass per wall

Standard Melamine

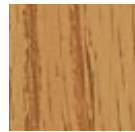
Walls and optional ceiling



7188
Dark Cherry



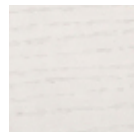
5364
Cherry



5486
Red Oak



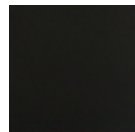
0860NT
Silken Maple



L96
Light Bleached
Wood
Effect



0328
Brushed
Stainless Steel
Effect



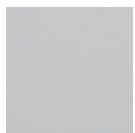
0080
Black



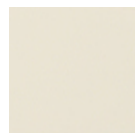
1200
Charcoal



1202
Dark Grey



8805
Light Grey



932
Antique White



A092
Oxford White
[matches white
ceiling]



Standard cab

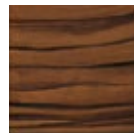


Stainless accent cab

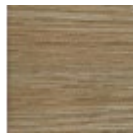
Optional Cab Finishes

Luxury MDF

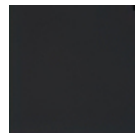
High gloss onlay panels



Walnut
[stock]



Kenya



Anthracite



Inox
[satin finish]



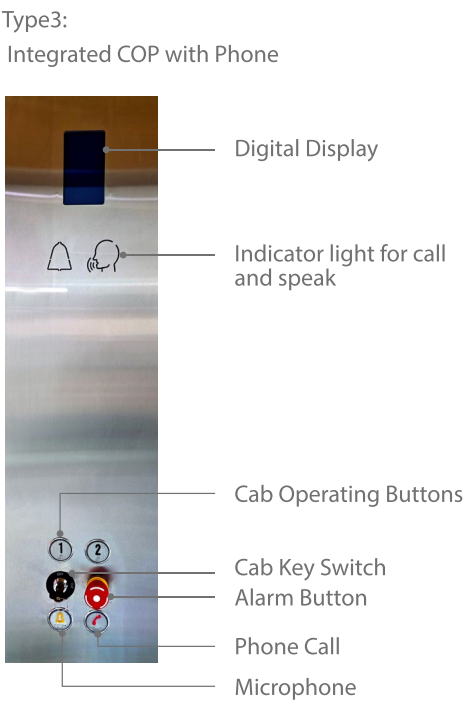
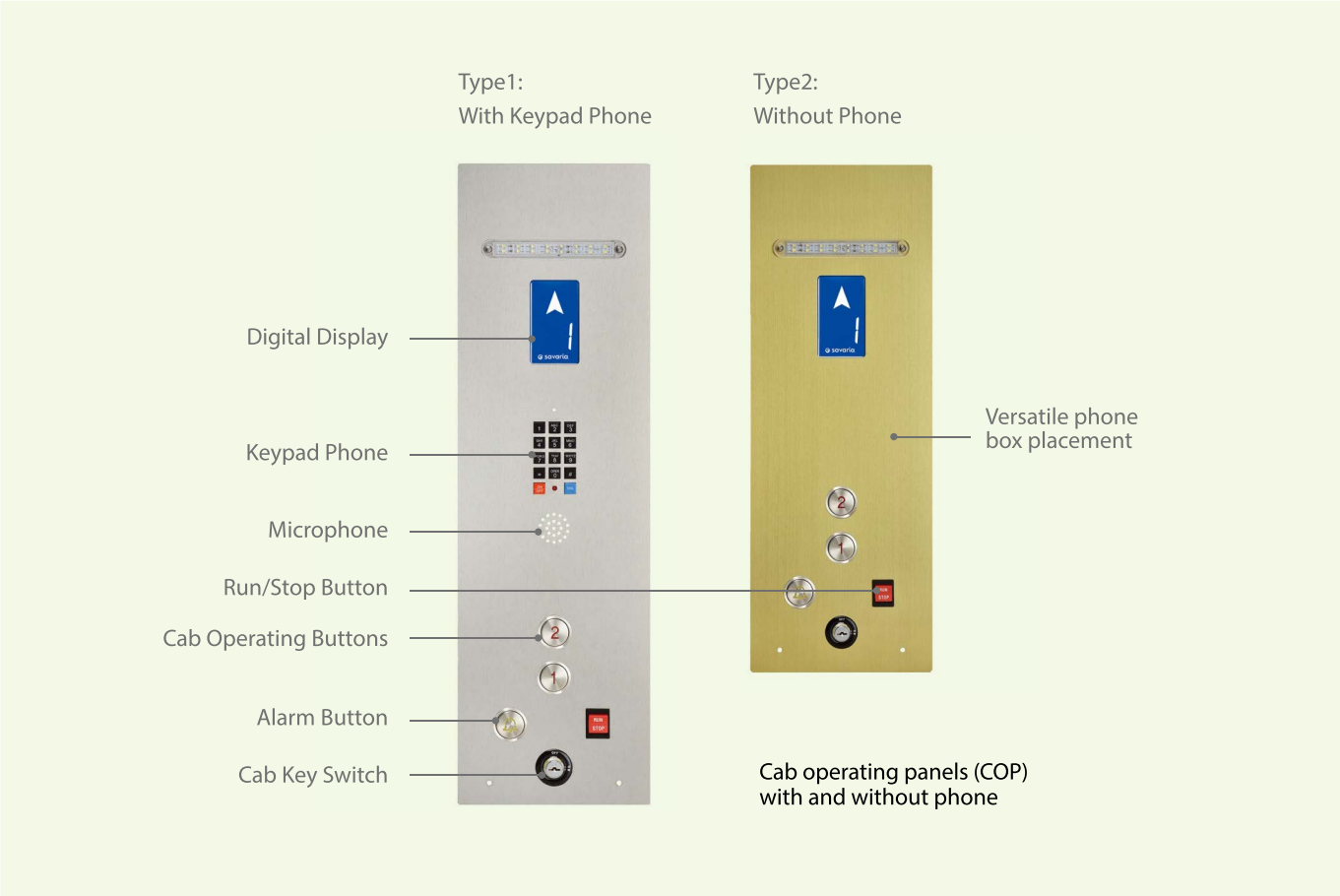
Pearl Matrix
[stock]



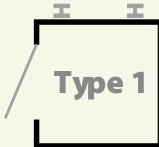
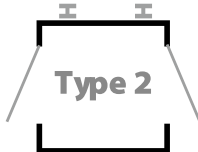
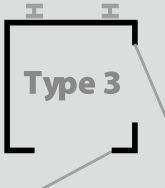
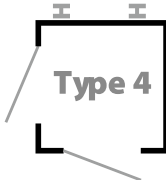
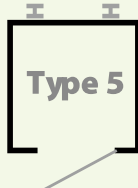
White



Walnut Luxury MDF



Choose from the widest range on the market to finish your home elevator perfectly.

ECLIPSE	Type 1		Type 2		Type 3		Type 4		Type 5	
CAB SIZE	WIDTH	DEPT	WIDTH	DEPT	WIDTH	DEPT	WIDTH	DEPT	WIDTH	DEPT
Standard1: 900X1300mm	with slim door		with slim door		with slim door		with slim door		with slim door	
	1485 X1554mm		1485 X 1599mm		1526 X 1630mm		1526 X 1630mm		1472 X 1554mm	
	light screen		light screen		light screen		light screen		light screen	
	1302 X 1440mm		1308 X 1366mm		1289 X 1467mm		1289 X 1467mm		1289 X 1525mm	
Standard2: 1100X1400mm	with slim door		with slim door		with slim door		with slim door		with slim door	
	1608 X1654mm		1608 X 1698mm		1665 X 1730mm		1665 X 1730mm		1672 X 1654mm	
	light screen		light screen		light screen		light screen		light screen	
	1508 X 1565mm		1508 X 1505mm		1489 X 1565mm		1489 X 1565mm		1489 X 1625mm	
										

Eclipse Requirements

- Power supply: 230 volt, single phase, 60 Hz, 30-amp fused disconnect box with 20-amp fuse
- Lighting supply: 120 volt, 60 Hz, 15 amps
- Pit depth: 203mm recommended, but as shallow as 152mm is possible; 254mm required for HD model
- Overhead: 2438mm for standard 2032mm cab; 2540mm for 2133mm cab; 2844mm for 2438mm cab

Slim Door



Add convenience and an elegant, modern appearance to your Savaria home elevator with automatic slim doors. These commercial-grade doors can be used as a complete system, or in combination with a swing-style landing door. Finish in stainless steel, powder coated paint, or framed glass.

Stainless Steel Door



Blackended stainless steel is as option.

Framed Glass Door



Clear glass and translucent glass are options.

Swing Door

Hall call button integrated on door

Clear glass and translucent glass are options.

Aluminum frame in white, or optional black, silver or custom color with frosted or clear glass.



Choose from the widest range on the market to finish your home elevator perfectly.

Powder Coating

Popular Colors



Hall calls



Stainless steel LED light
Brass LED light
Black LED light

Lights



Fixtures

Stainless Steel as base upgrade on handrail
Brushed Brass upgrade
Blackened Stainless Steel upgrade

Handrails



Savaria offers a wide range of customizable color options for your preferences. For a personalized selection, we encourage you to contact the Savaria Sales team or your dealer, who can provide you with more detailed information and assist in tailoring your choice to your exact liking.

Better
mobility
for life



Savaria (Huizhou) Mechanical Equipment Manufacturing Co., Ltd.

Panli Village, Lilin Town, ZhongKai National Hi-tech Industrial
Development Zone. Huizhou City, Guangdong 516035 China

Email: contactasia@savaria.com

Website: www.savaria.asia

International(EN): +86 592 6038779

Within China(CN): 400 7654123